

Electronic Supplementary Information

Cation- Interaction As a Tool To Enhance the Power of a Chiral Auxiliary During Asymmetric Photoreactions within Zeolites

Lakshmi S. Kaanumalle, J. Sivaguru, N. Arunkumar, S. Karthikeyan and V. Ramamurthy

Contents:

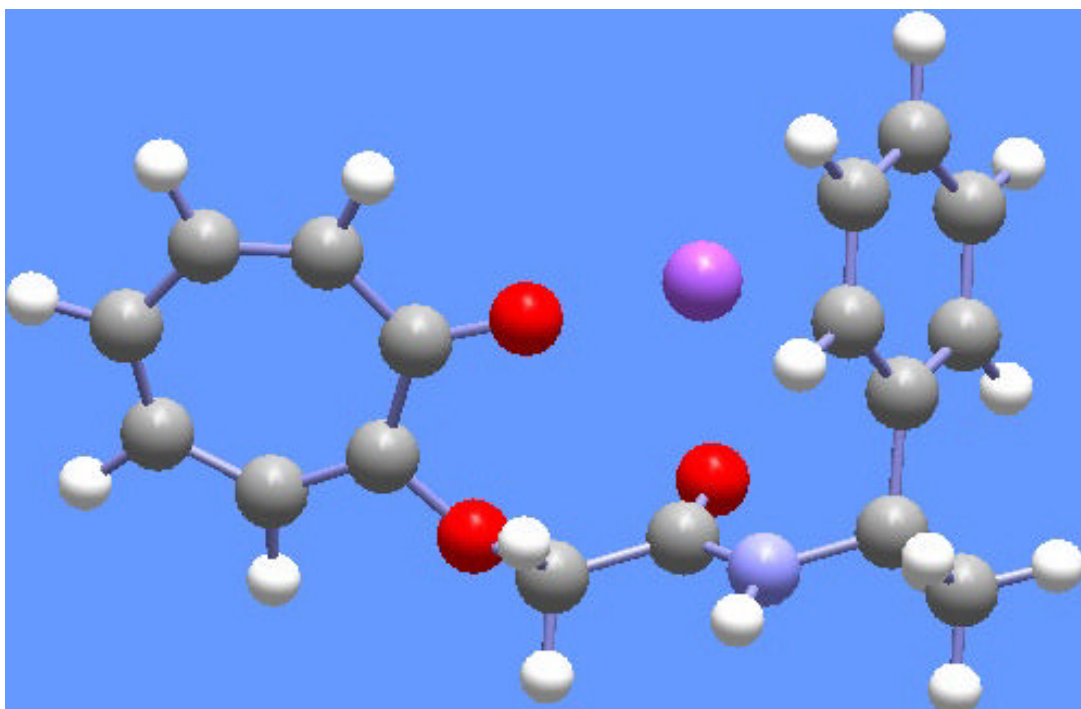
Figure 1: HF/3-21G* optimized structures and binding affinities of Na⁺ bound **1a**. page 2

Figure 2: HF/3-21G* optimized structures and binding affinities of Na⁺ bound **1c**. page 3

Figure 3: HF/3-21G* optimized structures and binding affinities of Na⁺ bound **5a** and **5c**. page 4

Figure 4: HF/3-21G optimized structures and binding affinities of Li⁺ bound **3a** and **3c**. page 5

(a) B.E (Na⁺ complex) = -96.89 kcal/mol



(b) B.E (Na⁺ complex) = -85.90 kcal/mol

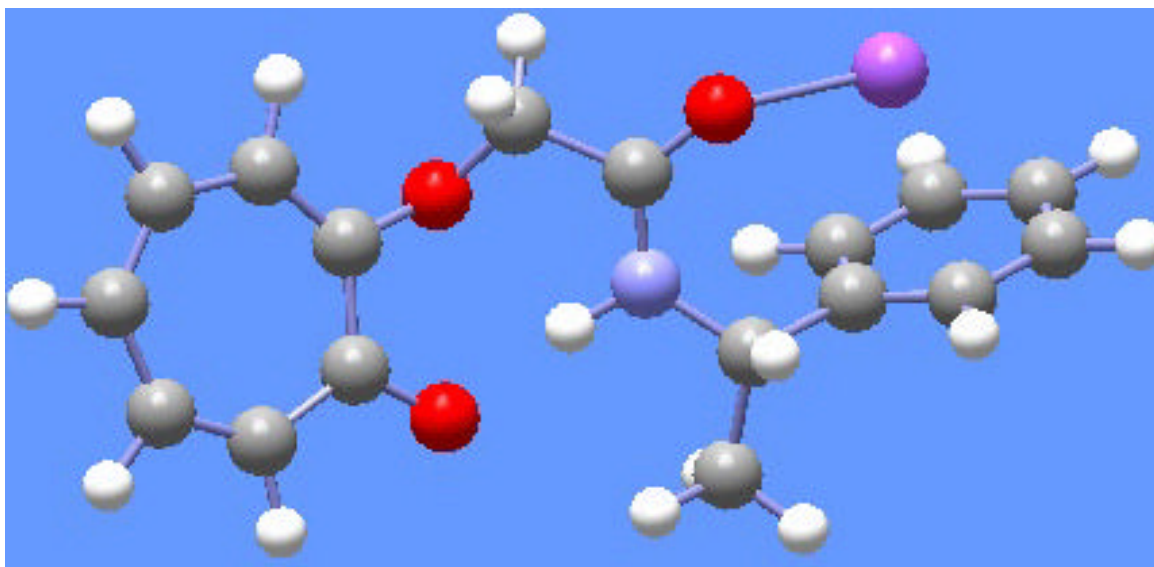
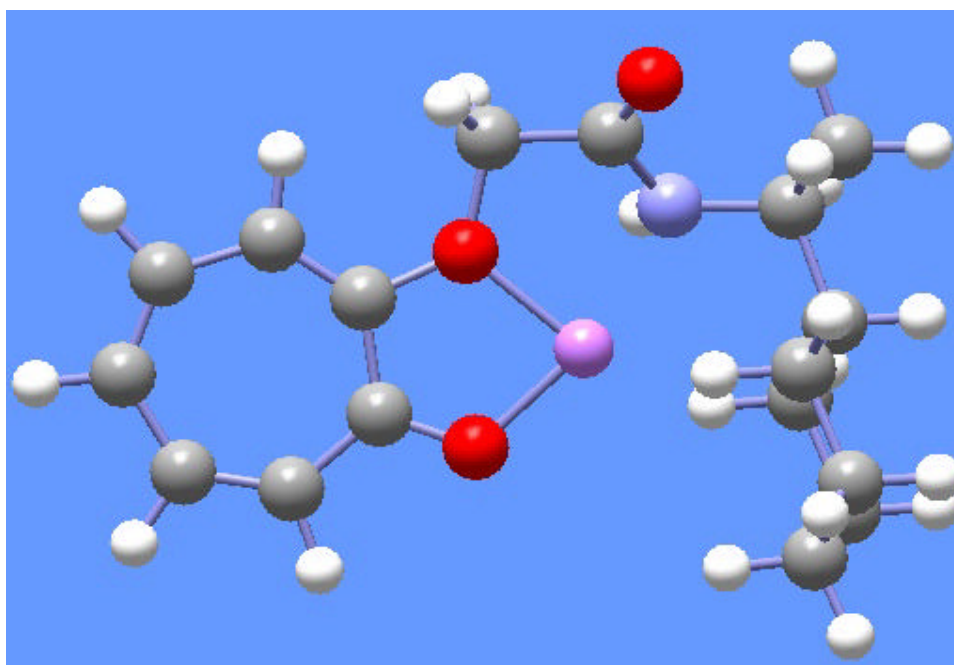


Figure 1: HF/3-21G* optimized structures of Na⁺ bound **1a**. Binding affinities are included at above each structure.

(a) B.E (Na+ complex) = -75.49 kcal/mol



(b) B.E (Na+ complex) = -65.32 kcal/mol

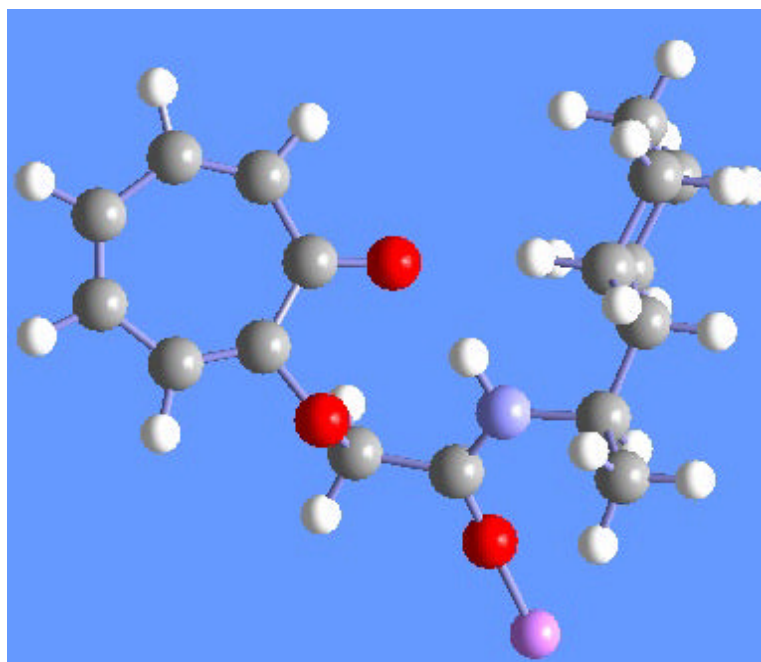
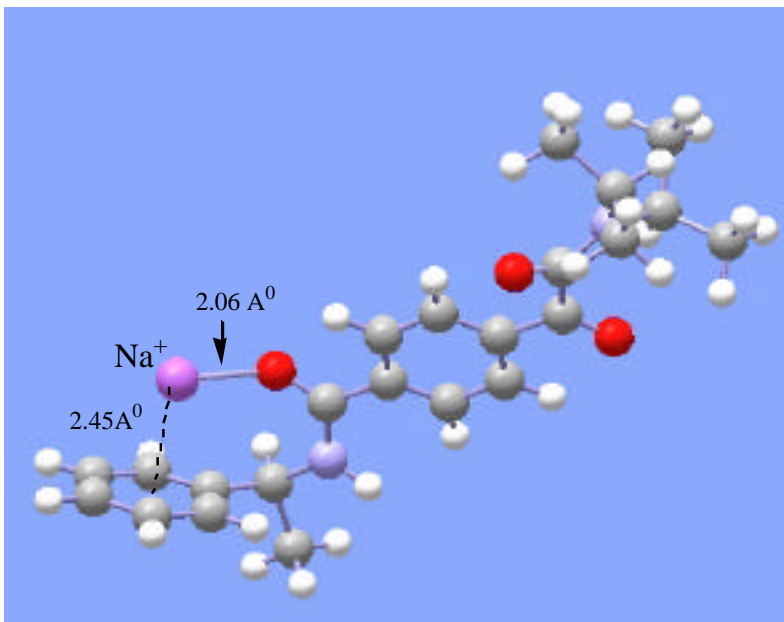


Figure 2: HF/3-21G* optimized structures of Na⁺ bound **1c** . Binding affinities are included above each structure.

(a) $B A = 74.80 \text{ kcal/mol}$



(b) $B A = 58.86 \text{ kcal/mol}$

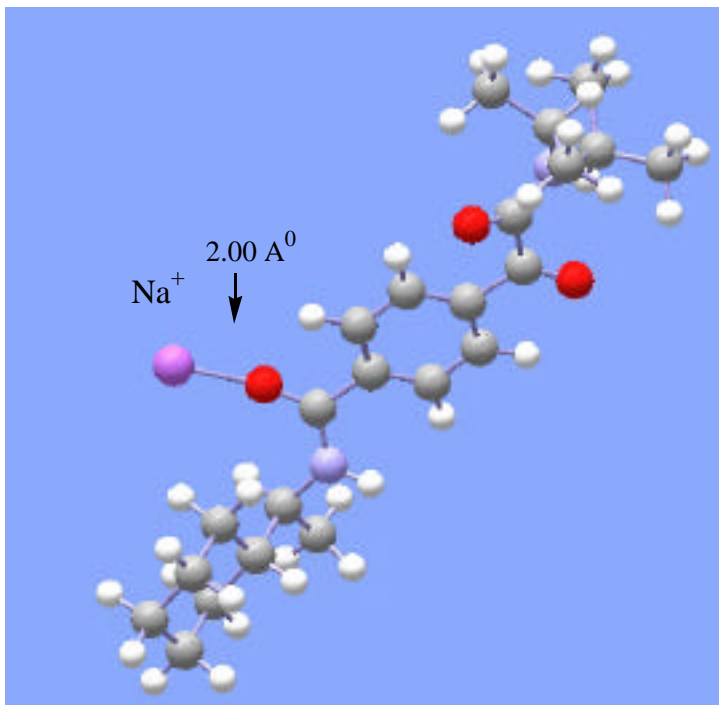
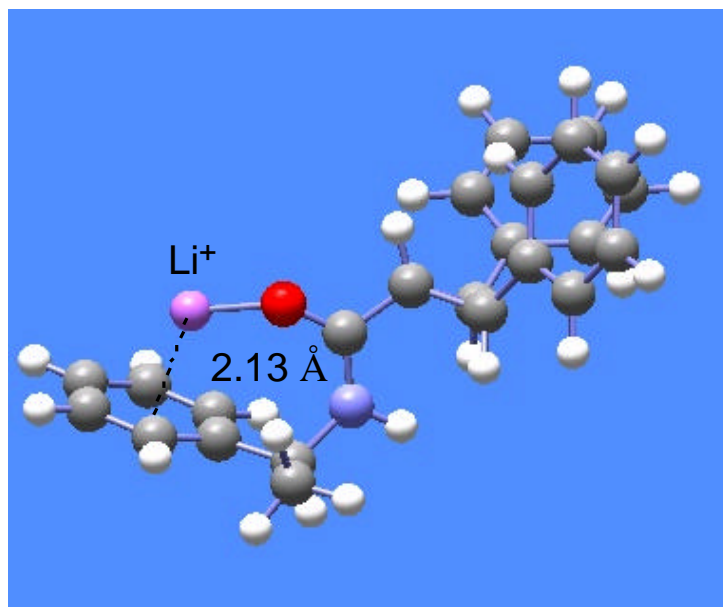


Figure 3: HF/3-21G* optimized structures of Na^+ bound **5a** (a) and **5c** (b). Binding affinities are included at the top of each structure.

(a) $B A = 91.3 \text{ kcal/mol}$



(b) $B A = 80.26 \text{ kcal/mol}$

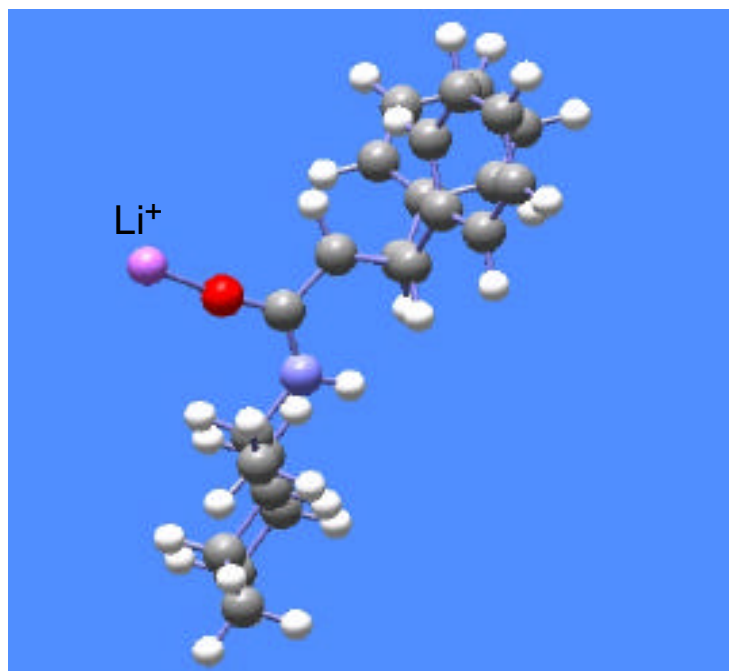


Figure 4: HF/3-21G optimized structures of Li^+ bound **3a** (a) and **3c** (b). Binding affinities are included at the top of each structure.